



# Three Sopranos

*A Journey from Baroque to Folk Opera*

*Laurice Simmons Kennel*

*Logan Laudenslager*

*Katherine Merryman*

*Accompanist*

*Elena Millar*

**Saturday, October 5, 2024, 8:00 PM**

**Sunday, October 6, 2024, 4:30 PM**

**EPIPHANY LUTHERAN CHURCH**  
**1100 COLONIAL ROAD, HARRISBURG, PA**

## Baroque

- Thy Hand, Belinda. . . When I am Laid in Earth*** Laurice Simmons Kennel  
*Dido & Aeneas*, Purcell
- Armida, dispietata. . . Lascia, ch'io pianga*** Katherine Merryman  
*Rinaldo*, Handel

## Classical

- Vedrai, carino*** K. Merryman  
*Don Giovanni*, Mozart
- Una donna a quindici anni*** Logan Laudenslager  
*Così fan tutte*, Mozart
- Deh vieni, non tardar*** K. Merryman  
*Le Nozze di Figaro*, Mozart
- Porgi amor*** L. Kennel  
*Le Nozze di Figaro*, Mozart

## Romantic

- Comme autrefois*** L. Laudenslager  
*Les Pêcheurs de Perles*, Bizet
- Flower Duet*** L. Kennel  
*Lakmé*, Delibes
- Habañera*** L. Laudenslager  
*Carmen*, Bizet
- Adieu, notre petite table*** K. Merryman  
*Manon*, Massenet

## Intermission

### Romantic

- Vissi d'arte*** L. Kennel  
*Tosca*, Puccini
- Quando m'en vo*** L. Laudenslager  
*La Bohème*, Puccini
- Mi chiamano Mimi*** K. Merryman  
*La Bohème*, Puccini
- Chi il bel sogno di Doretta*** L. Laudenslager  
*La Rondine*, Puccini
- Un bel di, vedremo*** L. Kennel  
*Madama Butterfly*, Puccini
- Saper vorreste*** L. Laudenslager  
*Un ballo in maschera*, Verdi
- O Patria mia*** L. Kennel  
*Aida*, Verdi

### Folk

- Embroidery Aria*** K. Merryman  
*Peter Grimes*, Britten
- Summertime*** L. Kennel  
*Porgy and Bess*, Gershwin
- K. Merryman



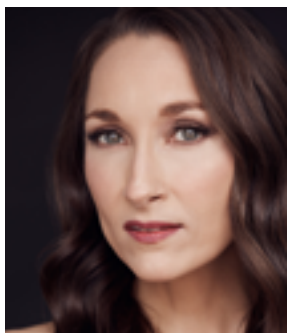
### ***Laurice Simmons Kennel***

Soprano, was born and raised in south western Michigan. She now resides in Philadelphia, PA with her husband and two cats. She received her Bachelor of Music in Vocal Performance from Michigan State University and her Master of Music in Vocal Performance from the University of Colorado at Boulder. Currently, Ms. Kennel studies privately with Sharon Sweet and coaches with Harold Evans. Laurice has performed a wide range of operatic roles. She has sung the role of Mimi (La Boheme), Micaela (Carmen), Donna Anna (Don Giovanni), Violetta (La Traviata) and Suor Angelica (Suor Angelica). Ms. Kennel has sung with the Opera Company of Philadelphia, New York City Opera at Lincoln Center, Lyric Opera Company Los Angeles and OperaDelaware. Recently, she sang the role of Elisabeth Vigee Le Brun in the West Coast of the opera "Girondines" with Mission Opera. She is a soloist with the Germantown Oratorio Choir and she is a scholar with the Marian Anderson Historical Society located here in Philadelphia.



### ***Logan Laudenslager***

is a versatile Philly-based opera and choral performer and arts administrator. Recent operatic appearances include Elvira (Rossini's *The Times are Nightfall*), Despina (*Così fan tutte* - Capitol Opera Harrisburg), Sister Constance (*Dialogues of the Carmelites* - Delaware Valley Opera Company), Soprano Soloist (*Brahms Requiem*), Rapunzel (*Into the Woods*), and work with Boheme Opera NJ, Hub City Opera, Berks Opera, and Operallora. Logan's been a Co-Manager of Opera on Tap Philadelphia since 2023, responsible for producing curated concerts and staged productions in the area in an effort to make classical music accessible. She also sings with a number of choral and music groups, including The Choristers, Philadelphia Chorale, Philadelphia Symphonic Choir, Fellini Cafe's Opera Night, and Olde Towne Carolers, and is the alto section leader at St. Timothy's Episcopal in Roxborough.



### ***Katherine Merryman***

Lyric Soprano. Trained in the U.S. and Europe, her background is in operatic voice, classical piano, and foreign language. Her excellent acting is evident when she sings, wholly embodying the identity of the characters she portrays, delivered with her clear, rich soprano - full yet agile. She actively performs, most recently singing lead as Gretel

and the Dew Fairy in Center Stage Opera's (PA) "Hansel and Gretel" and covering The Grand Duchess in the Victorian Lyric Opera Company's (MD) performance of The Grand Duchess of Gerolstein (Offenbach). She speaks three languages and has sung in ten. A skilled speaker and writer, she develops unique concert dramas and programs leveraging a variety of music styles and technology. Outside of music, Katherine is passionate about sports nutrition and fitness, she is also a weightlifter and firmly believes that being fit and strong directly contributes to being a better performer.

(<https://www.thecatalystvoice.com/> @thecatalystvoice)



### ***Elena Lebedeva Millar***

is a classical pianist and a piano teacher and has had several performances with Capitol Opera, Harrisburg as the featured pianist. She immigrated to the US in 2008 from Republic of Moldova, where she graduated from Rachmaninov College of Music, and went on to continue her higher education by entering into the Moldova Academy

of Music, Theater and Fine Arts. There, she obtained her degree in Piano Performance and Teaching. Since then, Elena has been playing variety of concerts; solo and with other instrumentalist and singers in Central Pennsylvania and has recorded several CDs (Paul Millar Studio productions). A significant event in Elena's solo career in the US was playing with the Hershey Symphony Orchestra, opening the 2010-2011 Season in Hershey Theater under conducting of Dr. Sandra Dackow, playing Mozart's Concerto no. 13 in C major. Elena is a resident of Palmyra, PA where she privately teaches piano playing.

## PHOTOS FROM OTHER CAPITOL OPERA PRODUCTIONS

**Kathleen Torchia Travers**  
**Todd Shaffer**  
*La Boheme*  
Capitol Opera Sacramento



**Amanda White** / *Rigoletto*  
Capitol Opera Harrisburg



**Jamie Lynne Bonetto**  
**John Minagro**  
*La Traviata*  
Capitol Opera Raleigh



**Alyssa Brode** / *La Traviata*  
Capitol Opera So. California



**Joseph Smith**  
*Rigoletto*  
Capitol Opera  
Harrisburg



**Cast** / *Rose of the Danube*  
Capitol Opera Harrisburg

### Capitol Opera

was founded by Kathleen Torchia in 1990, originally as the Voice Fitness Institute to give Kathleen's voice students a performing venue but, very soon after, artists from all over the Country were coming to Sacramento for opportunities to perform in the little black box theater in Carmichael. ***La Piccola Scala***, on Ross Avenue, was active with an Opera and a Broadway Series until 2004. Kathleen had to return to Pennsylvania to care for her elderly father. While in Harrisburg, she operated Capitol Opera Harrisburg which she launched in July 2000.

She was a pioneer in the growing arena of community opera (frequently funding the artists' travel and housing them at her home in Fair Oaks), something sorely missing between the University opera workshop level and the Regional/Professional opera companies. Kathleen's original idea was to have a Capitol Opera Company in every Capital City, but her husband's health issues postponed her quest. Currently there are four companies, which are branches of Capitol Opera Companies, Inc., a non-profit, 501(c)(3), community-benefit corporation.

## STAFF

*Producer*

*Director*

*Musical Director/Pianist*

*Stage Designer*

*Graphic Artist*

*Kathleen Torchia Travers*

*Kathleen Torchia Travers*

*Elena Millar*

*Kathleen Torchia Travers*

*Calvin Ligh/Ligh Creative*

---

## ACKNOWLEDGEMENTS

*Jillian Riddle, Pastor, Ed Sheedy, the Staff and Community of Epiphany Lutheran Church*

*Thank you to our gracious and generous donors.*

*A Very Special Thank You to Cathy Keel - for her work as our liason with Epiphany Lutheran Church .*

*Three amazing Sopranos accompanied by an amazing pianist.*

**--Kathleen Torchia Travers**



**Kathleen Torchia Travers**  
*Founding General Director*  
**Capitol Opera Companies, Inc.**



---

SACRAMENTO HARRISBURG RICHMOND ALBANY

---

*Capitol Opera Companies, Inc., is a non-profit, community benefit corporation. Capitol Opera's Mission is to provide performing opportunities for developing and/or professional artists, who need roles on their resumes, and to bring affordable opera to the communities we serve.*

[www.capopera.com](http://www.capopera.com)